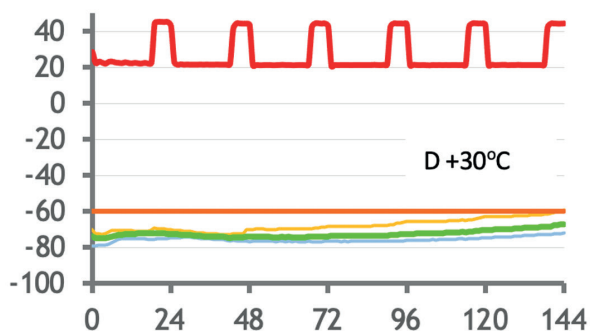


20" container <b>Fits 22</b>	40" container <b>Fits 60</b>	TCV <b>Fits 60</b>	Articulated Lorry <b>Fits 66</b>	Wide / Narrow bodied <b>Fits 48 / 23</b>	Accepts <b>Sub Pallet</b>	System Tare <b>175kg*</b>	Volumetric <b>168kg</b>	Int. Payload <b>297L*</b>

## Features & Benefits

- 120 hour product protection for <-60°C (<-76°F) (deep frozen) using dry ice
- Fully reusable solution
- Providing significant environmental advantages over disposable and semi-reusable systems
- Integral datalogger providing full audit trail and real-time internal and external temperature records
- Compatible with wide and narrow bodied aircraft
- Sub-pallet-sized payloads
- No human intervention throughout transit required



\* figures based upon pack out system 143 inclusive of dry ice and packaging